

Test Booklet Code

## SUSHRUT

ENGLISH  
**50**

This Booklet contains **24** pages, including Rough Page.

Date : **21.06.2026**

**Do not open this Test Booklet until you are asked to do so.**

**Important Instructions :**

1. The Answer Sheet is inside this Test Booklet. When you are directed to open the Test Booklet, take out the Answer Sheet and fill in the particulars on OFFICE Copy carefully with **blue/black** ball point pen only.
2. The test is of **3 hours 15 minutes** duration and the Test Booklet contains **180** questions. Each question carries 4 marks. For each correct response, the candidate will get 4 marks. For each incorrect response, one mark will be deducted from the total scores. The maximum marks are **720**.
3. Use **Blue/Black Ball Point Pen only** for writing particulars on this page/markings responses on Answer Sheet.
4. Rough work is to be done in the space provided for this purpose in the Test Booklet only.
5. On completion of the test, the candidate **must hand over the Answer Sheet (ORIGINAL and OFFICE Copy) to the Invigilator** before leaving the Room/Hall. The candidates are allowed to take away this Test Booklet with them.
6. **The CODE for this Booklet is 50. Make sure that the CODE printed on the Original Copy of the Answer Sheet is the same as that on this Test Booklet.** In case of discrepancy, the candidate should immediately report the matter to the Invigilator for replacement of both the Test Booklet and the Answer Sheet.
7. The candidates should ensure that the Answer Sheet is not folded. Do not make any stray marks on the Answer Sheet. Do not write your Roll No. anywhere else except in the specified space in the Test Booklet/Answer Sheet.
8. Use of white fluid for correction is **NOT** permissible on the Answer Sheet.
9. Each candidate must show on demand his/her Admit Card to the Invigilator.
10. No candidate, without special permission of the centre Superintendent or Invigilator, would leave his/her seat.
11. The candidates should not leave the Examination Hall without handing over their Answer Sheet to the Invigilator on duty and sign (with time) the Attendance Sheet **twice. Cases, where a candidate has not signed the Attendance Sheet second time, will be deemed not to have handed over the Answer Sheet and dealt with as an Unfair Means case.**
12. Use of Electronic/Manual Calculator is prohibited.
13. The candidates are governed by all Rules and Regulations of the examination with regard to their conduct in the Examination Room/Hall. All cases of unfair means will be dealt with as per the Rules and Regulations of this examination.
14. **No part of the Test Booklet and Answer Sheet shall be detached under any circumstances.**
15. The candidates will write the Correct Test Booklet Code as given in the Test Booklet/Answer Sheet in the Attendance Sheet.
16. Compensatory time of one hour five minutes will be provided for the examination of three hours and 20 minutes duration, whether such candidate (having a physical limitation to write) uses the facility of Scribe or not.

Name of the Candidate (in Capitals) : \_\_\_\_\_

Roll Number : in figures \_\_\_\_\_

: in words \_\_\_\_\_

Centre of Examination (in Capitals) : \_\_\_\_\_

Candidate's Signature : \_\_\_\_\_ Invigilator's Signature : \_\_\_\_\_

Facsimile signature stamp of Centre Superintendent : \_\_\_\_\_

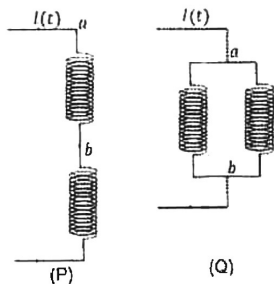
01. A particle of mass  $M$  moves along a horizontal  $x$  axis from  $x = 0$  to  $x = L$ . The coefficient of kinetic friction varies as a function of  $x$  as  $\mu_k(x) = \mu_0 - \alpha x$ , where  $\mu_0$ ,  $\alpha$  are constants of appropriate dimensions, so that  $\mu_k(L) = 0$ . The total work done by the frictional force during the motion is  $n\mu_0 MgL$ , where  $g$  is the acceleration due to gravity. The value of  $n$  is :

- (1) 3 (2) 1  
 (3)  $\frac{1}{3}$  (4)  $\frac{1}{2}$

02. The mean free path of molecules in an ideal gas A is half that of another ideal gas B. The diameter of the spherical molecules of gas A is twice the diameter of the molecules of B. If number densities of the gases A and B are  $n_A$  and  $n_B$ , respectively, then the correct option is :

- (1)  $n_A = n_B$  (2)  $n_A = 2n_B$   
 (3)  $n_A = \frac{1}{4}n_B$  (4)  $n_A = \frac{1}{2}n_B$

03. Two identical inductors are connected in two different configurations P and Q, where a time varying current  $I(t)$  is flowing, as shown in the figure. The induced emf between points  $a$  and  $b$  for configuration P is  $E_P$  and that for configuration Q is  $E_Q$ . Then ratio  $E_P/E_Q$  is : [Neglect the effect of mutual inductance]



- (1)  $1/4$  (2)  $1/2$   
 (3) 1 (4) 2

04. For sound waves, if the number of nodes for the 5<sup>th</sup> harmonic of an open-ended pipe is  $n$  and that for the 9<sup>th</sup> harmonic of the same pipe with one of its ends closed is  $m$ , the ratio  $\frac{n}{m}$  is

- (1)  $\frac{5}{9}$  (2)  $\frac{9}{5}$   
 (3) 1 (4)  $\frac{3}{5}$

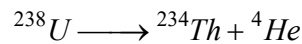
05. Consider a long solenoid of length  $l$  and radius  $r$ . If  $n$  is the number of turns per unit length and  $\mu_0$  is the permeability of free space, the inductance of the solenoid is :

- (1)  $\mu_0 \pi n^2 r^2 l$  (2)  $\mu_0 n^2 r^2 l$   
 (3)  $(\mu_0 / 2\pi) n^2 r^2 l$  (4)  $2\mu_0 \pi n^2 r^2 l$

06. Consider a particle moving along a straight line, whose position as a function of time is given by  $s(t) = \alpha t^2 - \beta t + \gamma$ , where  $\alpha = 1 \text{ ms}^{-2}$ ,  $\beta = 6 \text{ ms}^{-1}$  and  $\gamma = 5 \text{ m}$ . The average speed of the particle, in  $\text{ms}^{-1}$ , from  $t = 0$  to  $t = 6 \text{ s}$  is :

- (1) 12 (2) 6  
 (3) 3 (4) 0

07. Consider the following nuclear reaction :

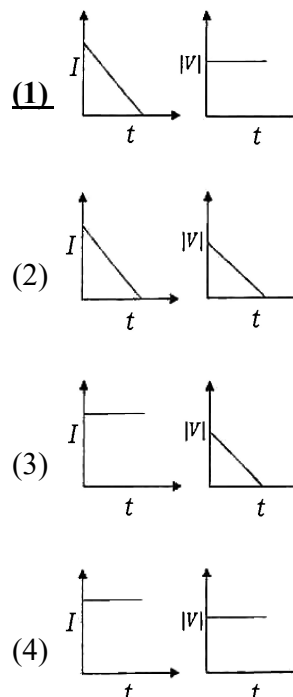


Take masses of  ${}^{238}\text{U}$ ,  ${}^{234}\text{Th}$  and  ${}^4\text{He}$  as 238.050 u, 234.043 u and 4.003 u, respectively. The  $Q$  value for the reaction, in keV, is

[Given :  $1 \text{ u} = 931.5 \text{ MeV c}^{-2}$ ]

- (1) 3726 (2) 3730  
 (3) 3736 (4) 3740

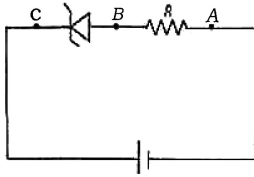
08. A beam of light falls on a metal surface such that photo-electrons are generated. If power of the light source starts to decrease linearly with time  $t$ , then variation of the photocurrent  $I$  and magnitude of the stopping potential  $|V|$  with time is best represented by :



Date :- 21/06/2026



16. An ideal Zener diode with breakdown voltage of  $-3V$  is reverse biased with a negative input voltage  $V_i = -5V$ . The magnitude of voltage difference between points B and A is :



- (1) 3 V  
 (2) **2 V**  
 (3) 1 V  
 (4) 0 V
17. In an adiabatic expansion, the temperature of one mole of an ideal monatomic gas ( $\gamma = 5/3$ ) decreases from 60K to 50K. The work done by the gas in the process is :

- (Take the universal gas constant as  $R = 8.3 \text{ J mol}^{-1} \text{ K}^{-1}$ )
- (1) 41.5 J  
 (2) 83 J  
 (3) **124.5 J**  
 (4) 166 J

18. A ray of light with wavelength  $\lambda$  is incident on three different photo-electric cells namely 1, 2 and 3. The threshold wavelength of these photo electric cells are  $\lambda_1, \lambda_2$  and  $\lambda_3$ , respectively and the magnitude of stopping potentials of these cells are  $V_1, V_2$  and  $V_3$ , respectively. The relation between  $\lambda$  and threshold wavelengths are  $\lambda_1 < \lambda, \lambda_2 > \lambda$ , and  $\lambda_3 \gg \lambda$ . The correct option is :

- (1)  **$V_1 = 0, V_2 < V_3$**   
 (2)  $V_1 = 0, V_2 > V_3$   
 (3)  $V_1 > V_2, V_3 = 0$   
 (4)  $V_1 < V_2, V_3 = 0$

19. A photon and an electron, each of 20 eV energy, move in free space. The ratio of linear momentum of electron  $p_e$  to that of photon  $p_{ph}$ ,  $\frac{p_e}{p_{ph}}$  is

(Take speed of light =  $3 \times 10^8 \text{ m s}^{-1}$ , charge of electron =  $-1.6 \times 10^{-19} \text{ C}$  and mass of electron =  $9 \times 10^{-31} \text{ kg}$ )

- (1)  $\frac{2}{450}$   
 (2)  $\frac{1}{250}$   
 (3) **225**  
 (4) 275

20. Which of the following measurements require 'index correction' ?

- (1) Measurement of resistance of a wire using meter bridge  
 (2) Measurement of gravitation acceleration using simple pendulum

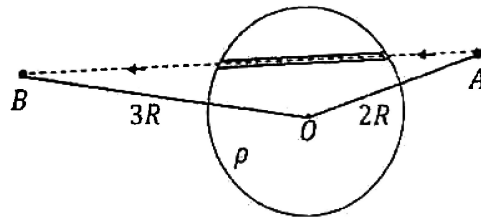
**(3) Measurement of focal length of lenses using optical bench**

- (4) Measurement of speed of sound using resonance tube

21. A unit positive point charge is taken slowly through an infinitesimally thin tube that is inside a charged dielectric sphere of radius  $R$ , having uniform positive charge density  $\rho$ , as shown in the figure. The initial and final positions of the charge are marked by A and B at distance  $2R$  and  $3R$  respectively, from the centre of the sphere. In this process, the magnitude

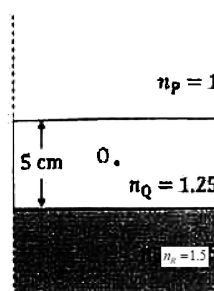
of the total work done on the point charge is  $\frac{\rho R^2}{n \epsilon_0}$ .

The value of  $n$  is : ( $\epsilon_0$  is the permittivity of vacuum).



- (1) 2  
 (2) 6  
 (3) 9  
 (4) **18**

22. Consider three media P, Q and R with refractive indices 1, 1.25 and 1.5, respectively. The medium Q having a thickness of 5cm is placed between extended media P and R as shown in the figure. An object O is placed at the centre of medium Q. If viewed from medium P near the normal direction, the apparent depth of O is  $h_1$ . For similar observation from medium R, the apparent depth is  $h_2$ . The value of  $|h_1 - h_2|$ , in cm, is :

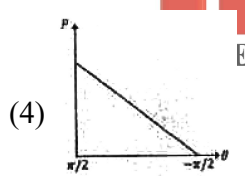
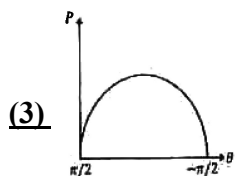
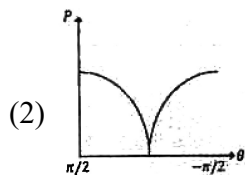
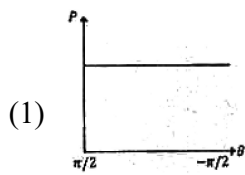
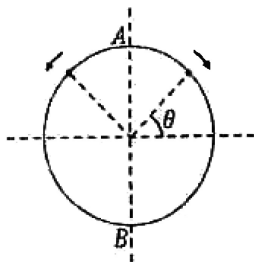


- (1) 0  
 (2) **1**  
 (3) 2  
 (4) 3

Date :- 21/06/2026

23. A frictionless circular wire of unit radius is fixed on the horizontal plane. Two point particles of unit mass start moving simultaneously from point  $A \left( \theta = \frac{\pi}{2} \right)$  with identical uniform angular speeds in opposite directions, and meet again at point  $B \left( \theta = -\frac{\pi}{2} \right)$ .

During this time, which of the following figures schematically represent the magnitude of the total linear momentum  $P$  of the system, as a function of  $\theta$ ?



24. The temperature of a metallic sphere of radius  $R$  is increased by a small amount  $\Delta T$ . If the linear coefficient of thermal expansion of the metal is  $\alpha$ , the approximate increase in the volume of the sphere is :

- (1)  $2\pi R^3 \alpha \Delta T$                       (2)  $3\pi R^3 \alpha \Delta T$   
 (3)  $4\pi R^3 \alpha \Delta T$                       (4)  $6\pi R^3 \alpha \Delta T$

25. A cylindrical cork of uniform density floats in a liquid of density  $\rho_1$ . If the cork is depressed slightly and released, it oscillates harmonically with time period  $T$ . If the same cork floats in another liquid of density  $\rho_2$ , then the similar oscillation has time period  $2T$ . The value of  $\rho_2 / \rho_1$  is

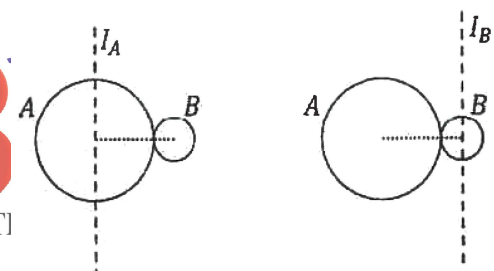
- (1) 4    (2) 2  
 (3)  $1/2$     (4) 1/4

26. One main scale division of a Vernier calliper is equal to 1 mm and the number of divisions on the Vernier scale is 10. When both the jaws touch each other, the Vernier scale shifts to the left of zero of the main scale in such a way that 4<sup>th</sup> Vernier division coincides with a division of the main scale. If this Vernier calliper measures the length of a wire to be 1 cm, the actual length of the wire is:

- (1) 0.60 cm  
 (2) 0.96 cm  
 (3) 1.00 cm  
 (4) 1.04 cm

Ans. (4 approx)/Bonus

27. A solid sphere A of radius  $R$  and mass  $M$  is attached at a point to a smaller solid sphere B of radius  $r < R$  and mass  $m < M$ . Assume that the line joining their centres lies along the horizontal. The moment of inertia of the system calculated about a vertical axis passing through the centre of A is  $I_A$  and that calculated about a vertical axis passing through the centre of B is  $I_B$ . The difference  $I_A - I_B$  is:



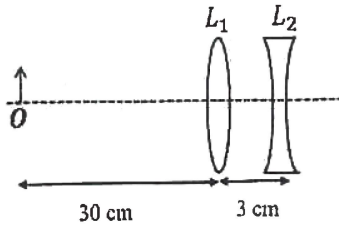
- (1)  $(M - m) (R + r)^2$   
 (2)  $(m - M) (R + r)^2$   
 (3)  $(m - M) (R - r)^2$   
 (4) 0

28. Consider a spring-mass simple harmonic oscillator in one dimension. The mass of the particle is  $m$  kg and the spring constant is  $k \text{ Nm}^{-1}$ . At a given instant, the extension of the spring is  $x$  meter and the speed of the particle is  $v \text{ ms}^{-1}$ . On the  $x$ - $v$  plane, if the graph of  $v$  as a function of  $x$  is a circle, then the correct option is:

- (1)  $k = \frac{1}{m}$   
 (2)  $k = m$   
 (3)  $k = m^2$   
 (4)  $k = \sqrt{m}$

Date :- 21/06/2026

29. The lens combination as shown in the figure, consists of two lenses,  $L_1$  and  $L_2$ , of the focal lengths  $+10$  cm and  $-10$  cm, respectively. The position of the image formed is:



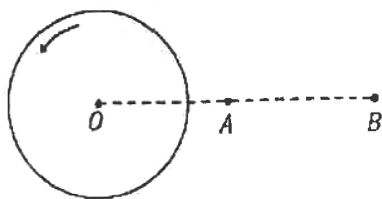
- (1) 20 cm to the left of the concave lens
- (2) 60 cm to the left of the concave lens**
- (3) 30 cm to the right of the concave lens
- (4) 60 cm to the right of the concave lens

30. An ac voltage  $V = 220 \sin(2 \times 10^3 t)$  Volt is applied to a series LCR circuit. Then the current amplitude in this circuit is:

(Given :  $L = 10$  mH,  $C = 25 \mu\text{F}$ ,  $R = 100 \Omega$ )

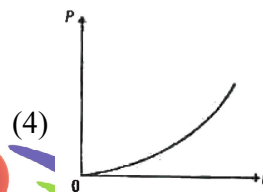
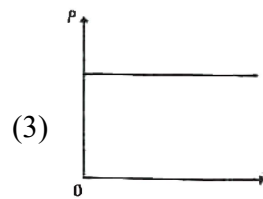
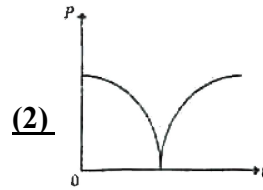
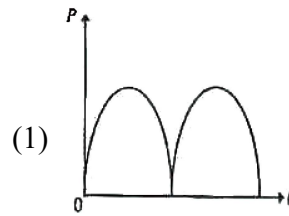
- (1) 2.2 A**
- (2) 5.5 A
- (3) 11.0 A
- (4) 22. A

31. A thin horizontal disc is rotating about a vertical axis passing through its fixed centre O. Its angular momentum is  $L_A$  and  $L_B$  computed about points A and B, respectively, with  $OB = 2 \times OA$ . The value of  $\frac{L_A}{L_B}$  is:

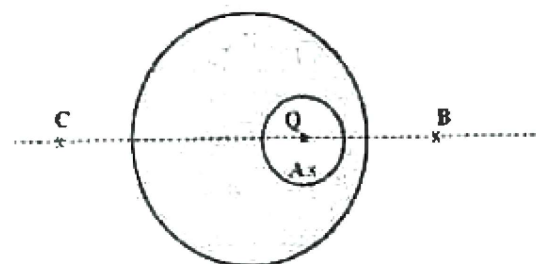


- (1)  $\frac{1}{4}$
- (2)  $\frac{1}{2}$
- (3) 1**
- (4) 2

32. A conducting loop of finite resistance lies on the x-y plane. There is a constant magnetic field in the z direction. The area of the loop varies with time t, as  $A = A_0(1 + \sin t)$  in appropriate units. The figure that correctly indicates the qualitative behaviour of the power P dissipated in the loop as a function of time is:



33. A point charge Q is placed inside a cavity within a solid isolated conducting sphere. Consider points A, B and C as shown in the figure, where the magnitudes of the electric fields are  $E_A$ ,  $E_B$  and  $E_C$ , respectively. The point B and C are at the same distance from the center of the solid sphere. The correct option is:



- (1)  $E_A = 0, E_A = E_C$
- (2)  $E_A \neq 0, E_B = E_C$**
- (3)  $E_A = 0, E_B > E_C$
- (4)  $E_A \neq 0, E_B < E_C$

Date :- 21/06/2026

34. Consider a fixed uniformly charged insulating sphere with radius  $R$  and total charge  $+Q$ . A point charge  $-q$  ( $q \ll Q$ ) with mass  $m$  is released from rest at a distance of  $3R$  from the centre of the charged. When the point charge reaches the surface of the sphere, its speed is:

( $\epsilon_0$  is the permittivity of vacuum, neglect gravitational forces).

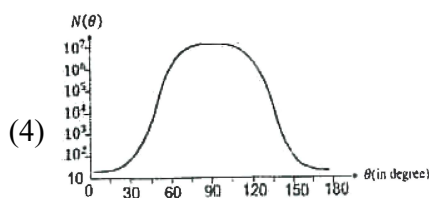
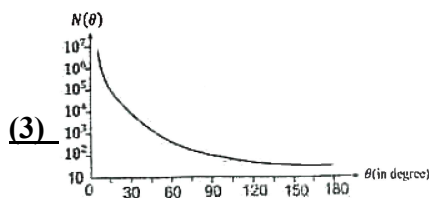
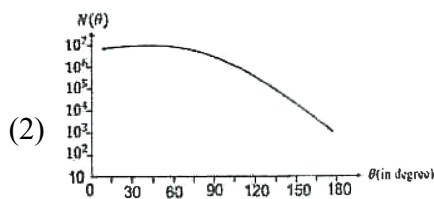
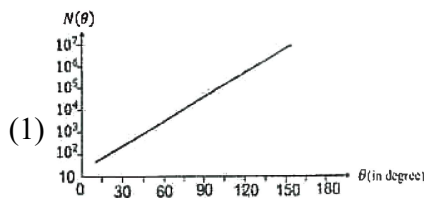
(1)  $\sqrt{\frac{3Qq}{4\pi\epsilon_0 mR}}$

(2)  $\sqrt{\frac{2Qq}{3\pi\epsilon_0 mR}}$

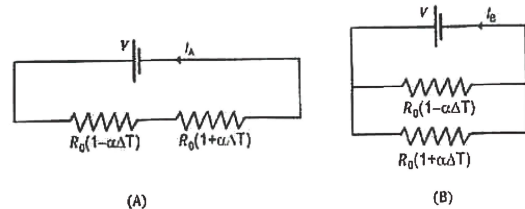
**(3)**  $\sqrt{\frac{Qq}{3\pi\epsilon_0 mR}}$

(4)  $\sqrt{\frac{Qq}{4\pi\epsilon_0 mR}}$

35. In Geiger-Marsden experiment, the number of scattered  $\alpha$ -particles  $N(\theta)$  is plotted as function of scattering angle  $\theta$ . Which of the following options represents the correct plot?



36. Consider two circuits, (A) and (B), each having two resistors. One of them has a positive temperature coefficient of resistance,  $+\alpha$ , while the other one has a negative temperature coefficient,  $-\alpha$ , as shown in the figure. The current through these circuits are denoted by  $I_A$  and  $I_B$ . At initial temperature, the resistance of the two resistors is  $R_0$ . As the temperature is increased, the correct option that describes the variation of current in these circuits is:



**(1)  $I_A$  remains constant while  $I_B$  increases**

(2)  $I_A$  decreases while  $I_B$  increases

(3)  $I_A$  increases while  $I_B$  decreases

**(4) both  $I_A$  and  $I_B$  remain constant**

**Ans : (1) or (4)**

37. Consider that  $\sigma_s$ ,  $k_B$ ,  $b$  represent Stefan-Boltzmann constant, Boltzmann constant and Wien's displacement law constant, respectively. The dimension of  $\sigma_s k_B^{-1} b$  is:

(1)  $[L^{-1}T^{-1}K^{-2}]$       (2)  $[L^{-1}K^{-2}]$

(3)  $[L^{-1}T^{-1}K^{-3}]$       (4)  $[L^{-1}T^{-1}K^{-4}]$

38. An electromagnetic wave travelling in a lossless dielectric medium having a dielectric field,  $E_x = E_0 \sin(kz - 2\pi \times 10^6 t)$   $\text{Vm}^{-1}$  where  $E_0$  is the amplitude and  $k$  is the wave vector. Among the following options, the incorrect choice is:

(1) The speed of the electromagnetic wave inside the medium is  $10^8 \text{ms}^{-1}$

**(2) The wavelength of the electromagnetic wave inside the medium is 300 m**

**(3) The magnetic field is given by the relation**

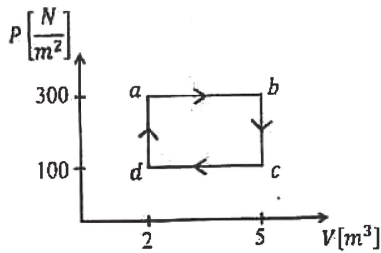
$B_y = \frac{B_0}{v} \sin(kz - 2\pi \times 10^6 t)$  **where  $v$  is the speed of the electromagnetic wave inside the medium**

**(4) The direction of propagation of the electromagnetic wave is along  $+z$**

**Ans : (2) or (3)**

Date :- 21/06/2026

39. One mole of an ideal monoatomic gas undergoes a cyclic process as shown in the figure. The total heat supplied to the gas is:



- (1) 400 J                      (2) 500 J  
**(3) 600 J**                      (4) 800 J

40. Consider that an electron is revolving in an excited state of Hydrogen atom with velocity  $\sqrt{25.6} \times 10^5 \text{ ms}^{-1}$ . The radius of the orbit is  $x \times 10^{-9} \text{ m}$ . The value of x is:

(Take the mass of electron to be  $9 \times 10^{-31} \text{ kg}$ , charge of electron =  $-1.6 \times 10^{-19} \text{ C}$  and

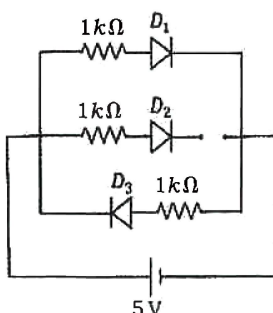
$$\frac{1}{4\pi\epsilon_0} = 9 \times 10^9 \text{ N m}^2 \text{ C}^{-2}$$

- (1) 4                              (2) 3  
 (3) 2                              **(4) 1**

41. A car travels on a circular racetrack of radius 50 m, which is banked at an angle  $\theta$ . If the car travels at a speed  $10 \text{ ms}^{-1}$ , then the wear and tear on its tyres is minimum. Taking the acceleration due to gravity to be  $10 \text{ ms}^{-2}$ , the value of  $\theta$  is:

- (1)**  $\tan^{-1}\left(\frac{1}{5}\right)$                       (2)  $\tan^{-1}\left(\frac{2}{5}\right)$   
 (3)  $\tan^{-1}\left(\frac{\sqrt{3}}{2}\right)$                       (4)  $\tan^{-1}\left(2\sqrt{3}\right)$

42. Three identical p-n junction diodes  $D_1, D_2$  and  $D_3$  are connected across a battery as shown in the figure. If the width of the depletion regions of  $D_1, D_2$  and  $D_3$  are  $W_1, W_2$  and  $W_3$ , respectively, then the correct option is:



- (1)  $W_1 > W_2 > W_3$                       (2)  $W_3 = W_1 > W_2$   
**(3)  $W_3 > W_2 > W_1$**                       (4)  $W_2 > W_1 = W_3$

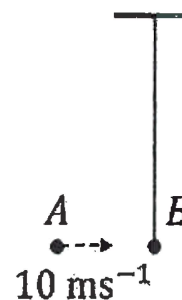
43. The following table presents the part of the electromagnetic spectrum and their corresponding major applications.

Part of the electromagnetic spectrum		Applications	
P	Microwave	I	For purifying the water
Q	UV rays	II	For warming the food
R	Gamma rays	III	For AM and FM communication systems
S	Radio wave	IV	For treating the Cancer cells

The correct option is:

- (1) P-I, Q-II, R-III, S-IV  
 (2) P-I, Q-IV, R-II, S-III  
**(3) P-II, Q-I, R-IV, S-III**  
 (4) P-II, Q-IV, R-III, S-I

44. Bob B of mass m at rest is hanging vertically from the ceiling via a massless string of length 10 m, as shown in the figure. Point mass A of mass m travelling horizontally with speed  $10 \text{ ms}^{-1}$  hits bob B elastically. The bob B rises h meter after the collision. Taking the acceleration due to gravity  $g = 10 \text{ ms}^{-2}$  and neglecting the size of the bob, the value of h is:



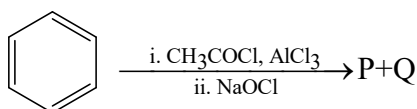
- (1) 8                              (2) 7  
**(3) 5**                              (4) 2.5

45. An ideal gas is made of polyatomic molecules. Each of the molecules has three translational, three rotational and f number of vibrational modes. If the ratio of heat capacities  $C_p/C_v$  of the gas is  $8/7$ , then the value of f is:

- (1) 4**                              (2) 3  
 (3) 2                              (4) 1

Date :- 21/06/2026

46. For the following reaction sequence, choose the correct option



- (1) If P is the sodium salt of a carboxylic acid, Q is a primary alcohol.  
 (2) P and Q are aromatic compounds.  
**(3) If P gives a carboxylic acid on acidification, Q gives a poisonous gas on exposure to air and light.**  
 (4) Both P and Q are carbonyl compounds.
47. Given below are two statements :

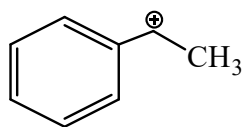
**Statement - I:**  $[Fe(ox)_3]^{3-}$  is chiral.

**Statement - II:**  $trans - [Cr(H_2O)_2(ox)_2]^-$  is chiral.

(Given :  $oxH_2 = HOOC - COOH$ )

In light of the above statements, choose the most appropriate answer from the options given below :

- (1) Both Statement-I and Statement-II are correct.  
 (2) Both Statement-I and Statement-II are incorrect.  
**(3) Statement-I is correct** but Statement-II is incorrect.  
 (4) Statement-I is incorrect but Statement-II is correct.
48. The following carbocation is stabilized by the interaction of the empty  $p$  orbital with



- (1) filled  $\sigma$  and filled  $\pi$  orbitals**  
 (2) empty  $\sigma$  and empty  $\pi^*$  orbitals  
 (3) empty  $\sigma^*$  and filled  $\pi$  orbitals  
 (4) empty  $\sigma^*$  and empty  $\pi^*$  orbitals
49. In potash alum, the ratio of  $K^+$  and  $SO_4^{2-}$  ions is

- (1) 1:2** (2) 2:1  
 (3) 2:3 (4) 3:2

50. The correct statement about peptides and proteins is

- (1) Tertiary structure of proteins has two or more polypeptide subunits.  
 (2) Only the proteins having a quaternary structure are biologically active.  
**(3) In  $\beta$  - pleated sheet structures, peptide chains are held together by intermolecular hydrogen bonds.**  
 (4) In  $\alpha$  - helices, the polypeptide chain is twisted into a left-handed screw (helix) through intramolecular hydrogen bonds.

51. The numbers 17.0145 and 21.0235 were rounded to three figures after the decimal point. The resulting numbers, respectively, are

- (1) 17.014 and 21.023  
 (2) 17.015 and 21.023  
**(3) 17.014 and 21.024**  
 (4) 17.015 and 21.024

52. The correct order of solubility of the given salts in water at 298 K is

Salt	$K_{sp}$ at 298 K
AgBr	$5.0 \times 10^{-13}$
Zn(OH) <sub>2</sub>	$1.0 \times 10^{-15}$
Hg <sub>2</sub> Cl <sub>2</sub>	$1.3 \times 10^{-18}$

- (1)  $Hg_2Cl_2 > Zn(OH)_2 > AgBr$   
 (2)  $AgBr > Zn(OH)_2 > Hg_2Cl_2$   
 (3)  $Hg_2Cl_2 > AgBr > Zn(OH)_2$   
**(4)  $Zn(OH)_2 \geq AgBr > Hg_2Cl_2$**
53. Among the following options, the correct trend in the electron gain enthalpy is
- (1)  $F > Cl > Br > I$   
 (2)  $Br > Cl > F > I$   
**(3)  $Cl > F > Br > I$**   
 (4)  $I > Br > Cl > F$

54. **Assertion A :**

For an ideal solution formed by mixing liquids **P** and **Q**,  $\Delta_{\text{mix}} H = 0$  and  $\Delta_{\text{mix}} V = 0$

**Reason R :**

No interactions occur between **P** and **Q** In the light of the above statements, choose the **most appropriate** answer from the options given below.

- (1) Both **A** and **R** are correct and **R** is the correct explanation of **A**.  
 (2) Both **A** and **R** are correct but **R** is NOT the correct explanation of **A**.  
**(3) A is correct but R is not correct**  
 (4) **A** is not correct but **R** is correct

## 55. The amino acid that gives a red-blood colour on treating its sodium fusion extract with sodium nitroprusside is

- (1) leucine (2) threonine  
**(3) methionine** (4) serine

56. The standard electrode potential ( $E^\circ$ ) for the half-cell reaction  $Fe^{3+} + e^- \rightarrow Fe^{2+}$  at 298 K is

(Given :  $E^\circ (Fe^{3+}/Fe) = -0.04$  V and  $E^\circ (Fe^{2+}/Fe) = -0.44$  V at 298 K)

- (1) +0.40 V **(2) +0.76 V**  
 (3) -0.48 V (4) +0.92 V

57. In an acidic medium, 10 mL of 0.25 M oxalic acid is titrated with  $KMnO_4$  solution. If the volume of  $KMnO_4$  solution required to reach end point is 10 mL, the strength of the  $KMnO_4$  solution is

- (1) 0.10 M** (2) 0.20 M  
 (3) 0.25 M (4) 0.15 M

## 58. According to crystal field theory, the correct order of ligands with respect to their decreasing order of field strength is

- (1)  $CO > NH_3 > H_2O > Cl^-$**   
 (2)  $CO > H_2O > NH_3 > Cl^-$   
 (3)  $Cl^- > H_2O > NH_3 > CO$   
 (4)  $Cl^- > NH_3 > H_2O > CO$

59. Two moles of an ideal gas undergo free expansion from 10 L to 100 L at 300 K. The values of  $\Delta S_{\text{system}}$  and  $\Delta S_{\text{surroundings}}$  are  
 (R is universal gas constant)

- (1)  $\Delta S_{\text{system}} = 0$ ;  $\Delta S_{\text{surroundings}} = 0$   
 (2)  $\Delta S_{\text{system}} = 4.606$  R;  $\Delta S_{\text{surroundings}} = 4.606$  R  
 (3)  $\Delta S_{\text{system}} = 0$ ;  $\Delta S_{\text{surroundings}} = 4.606$  R  
**(4)  $\Delta S_{\text{system}} = 4.606$  R;  $\Delta S_{\text{surroundings}} = 0$**

60.  $2A \xrightarrow{k} B$  is a zero-order reaction, where  $k = 1.0$  mol  $L^{-1} \text{min}^{-1}$ . If the initial concentration of A is 2 M, then the time taken to complete 75% of the reaction will be

- (1) 1.5 min **(2) 0.75 min**  
 (3) 1.0 min (4) 2.0 min

## 61. Given below are two statements : One is labelled as Assertion A and the other is labelled as Reason R.

**Assertion A :** Generally, 3d transition metals have high melting points.

**Reason R :** Involvement of 3d-electrons in addition to 4s - electrons in the interatomic metallic bonding.

In light of the above statements, choose the **most appropriate** answer from the options given below:

- (1) Both A and R** are correct and **R** is the correct explanation of **A**.  
 (2) Both **A** and **R** are correct and **R** is NOT the correct explanation of **A**.

- (3) **A** is correct but **R** is not correct  
 (4) **A** is not correct but **R** is correct

62. For a salt XY, which is a strong electrolyte, the plot of  $\Lambda_m$  versus  $\sqrt{c}$  has a slope of  $-90.0$  S  $\text{cm}^2 \text{mol}^{-3/2} \text{L}^{1/2}$  at 298 K. At 0.01 M concentration of XY, the value of  $\Lambda_m$  is 145.0 S  $\text{cm}^2 \text{mol}^{-1}$ . The limiting molar conductivity of  $Y^-$  ion ( $\lambda_{Y^-}^0$ , in S  $\text{cm}^2 \text{mol}^{-1}$ ) at 298 K will be

(Given :  $\lambda_{X^+}^0 = 74.0$  S  $\text{cm}^2 \text{mol}^{-1}$ )

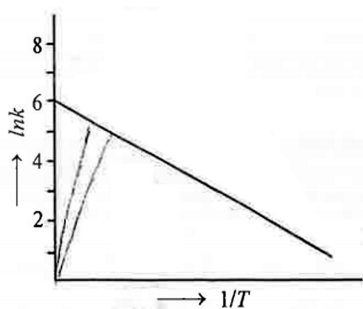
- (1) 80.0** (2) 100.0  
 (3) 90.0 (4) 76.0

63. The amount of carbon dioxide evolved upon complete combustion of 116 g of *n*-butane is

(Given : atomic mass in amu H = 1, C = 12 and O = 16)

- (1) 352 g** (2) 322 g  
 (3) 176 g (4) 362 g

64. For an elementary chemical reaction, the Arrhenius plot is given below.



If the energy of activation is  $6.64 \text{ kJ mol}^{-1}$  and  $R = 8.3 \text{ J K}^{-1} \text{ mol}^{-1}$ , the temperature at which the rate constant becomes  $e^2 \text{ min}^{-1}$ , is

- (1) 125 K                      (2) 150 K  
**(3) 200 K**                      (4) 250 K
65. Given below are two statements :

**Statement - I :** Heating NaCl with concentrated  $\text{H}_2\text{SO}_4$  and  $\text{MnO}_2$  results in oxidation of Mn.

**Statement - II :** Heating NaI with concentrated  $\text{H}_2\text{SO}_4$  and  $\text{MnO}_2$  results in reduction of Mn.

In light of the above statements, choose the *most appropriate* answer from the options given below:

- (1) Both Statement-I and Statement-II are correct.  
 (2) Both Statement-I and Statement-II are incorrect.  
 (3) Statement-I is correct but Statement-II is incorrect.  
**(4) Statement-I is incorrect but Statement-II is correct.**
66. Among the species given below, the spin-only magnetic moment is highest for

(Given : Atomic number of Ti = 22, Mn = 25, F = 26 and Co = 27)

- (1)  $[\text{Mn}(\text{CN})_6]^{3-}$**   
 (2)  $[\text{Fe}(\text{CN})_6]^{3-}$   
 (3)  $[\text{Co}(\text{NH}_3)_6]^{3+}$   
 (4)  $[\text{Ti}(\text{H}_2\text{O})_6]^{3+}$

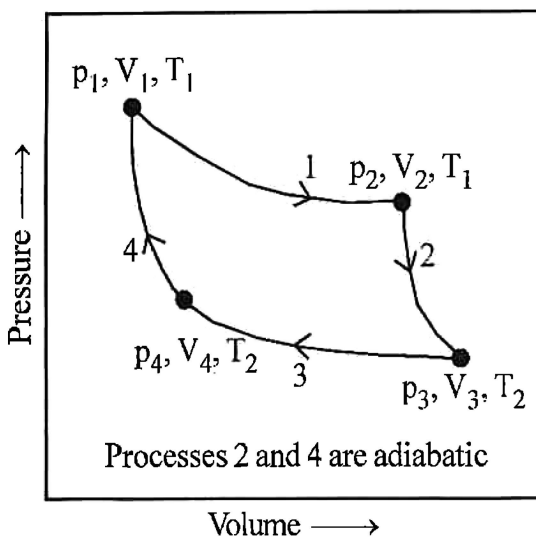
67. The lanthanide ion having four unpaired electrons is  
 (Given : Atomic numbers of Ce = 58, Nd = 60, Tb = 65 and Ho = 67)

- (1)  $\text{Nd}^{3+}$   
 (2)  $\text{Ce}^{3+}$   
 (3)  $\text{Tb}^{3+}$   
**(4)  $\text{Ho}^{3+}$**

68. The formula of tetraammineaquachloridocobalt(III) chloride is

- (1)  $[\text{Co}(\text{NH}_3)_4\text{Cl}_2] \times \text{H}_2\text{O}$   
 (2)  $[\text{Co}(\text{NH}_3)_4]\text{Cl}_3 \times \text{H}_2\text{O}$   
 (3)  $[\text{Co}(\text{NH}_3)_4(\text{H}_2\text{O})\text{Cl}]\text{Cl}$   
**(4)  $[\text{Co}(\text{NH}_3)_4(\text{H}_2\text{O})\text{Cl}]\text{Cl}_2$**

69. Consider the reversible processes for 1.0 mol of an ideal gas as shown in the figure.



$w_1, w_2, w_3$  and  $w_4$  represent work done (in calories) in the processes 1, 2, 3 and 4, respectively;  $\Delta U_2$  and  $\Delta U_4$  are changes in the internal energy for the processes 2 and 4, respectively.  
 [use  $R = 2 \text{ cal K}^{-1} \text{ mol}^{-1}$ ]

The correct option is

- (1)  $w_1 + w_3 = -2T_1 \ln \frac{V_2}{V_1} - 2T_2 \ln \frac{V_4}{V_3}$**   
 (2)  $w_2 + w_4 = \Delta U_2 - \Delta U_4$   
 (3)  $w_1 + w_2 = 2T_1 \ln \frac{V_2}{V_1}$   
 (4)  $w_1 + w_2 + w_3 + w_4 = 0$

Date :- 21/06/2026

70. Given below are two statements: One is labelled as Assertion A and the other is labelled as Reason R.

**Assertion A:** The first ionization enthalpy of O is lower than that of N and F.

**Reason R:** The loss of an electron from O leads to stable half-filled p orbital.

In light of the above statements, choose the most appropriate answer from the options given below:

(1) Both A and R are correct and R is the correct explanation of A.

(2) **Both A and R are** correct and R is NOT the correct explanation of A.

(3) A is correct but R is not correct.

(4) A is not correct but R is correct.

71. Consider the following statements about the solutions formed by mixing two liquids.

A. An ideal solution thus formed obeys Raoult's law throughout the composition range.

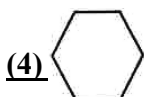
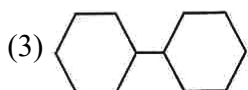
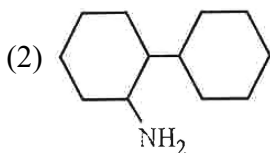
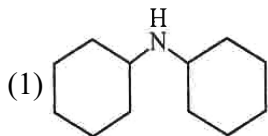
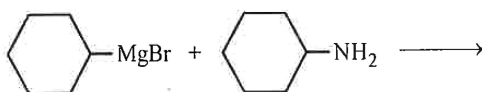
B. Mixture of chloroform and acetone shows negative deviation from Raoult's law.

C. Mixture of aniline and phenol shows positive deviation from Raoult's law.

(1) **A and B only** (2) B and C only

(3) A only (4) A and C only

72. One of the products formed in the following reaction is



73. The correct statements is

(1) **Boron has a maximum covalency of four.**

(2) Beryllium has three valence orbitals.

(3) Magnesium has a maximum covalency of four.

(4) Aluminium has five valence orbitals.

74. A protein undergoes reversible thermal denaturation from its initial state N to denatured state D according to  $N \rightleftharpoons D$ . At 60°C, the concentrations of both N and D are equal at equilibrium, and the standard enthalpy change of denaturation is 666 kJ mol<sup>-1</sup>. The standard entropy change ( $\Delta S^\circ$  in K<sup>-1</sup> mol<sup>-1</sup>) of the protein upon denaturation at 60°C is closest to

(1) **2.0** (2) 2000.0

(3) 333.0 (4) 11.1

75. Match the species in List I with their geometry in List II.

List I	List II
A. PCl <sub>5</sub>	I. Tetrahedral
B. BrF <sub>5</sub>	II. Square planar
C. BF <sub>4</sub> <sup>-</sup>	III. Trigonal bipyramidal
D. [Ni(CN) <sub>4</sub> ] <sup>2-</sup>	IV. Square pyramidal

Choose the correct answer from the options given below:

(1) A-IV, B-III, C-I, D-II

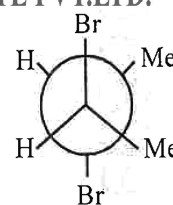
(2) **A-III, B-IV, C-I, D-II**

(3) A-III, B-I, C-II, D-IV

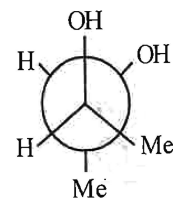
(4) A-III, B-II, C-I, D-IV

76. Given below are two statements:

**Statement I:** trans-But-2-ene upon treatment with Br<sub>2</sub> in CCl<sub>4</sub> gives the following product



**Statement II:** cis-But-ene upon treatment with alkaline KMnO<sub>4</sub> gives the following product



In the light of the above statements, choose the most appropriate answer from the options given below.

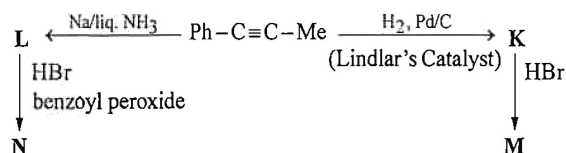
(1) Both Statement I and Statement II are correct.

(2) Both Statement I and Statement II are incorrect.

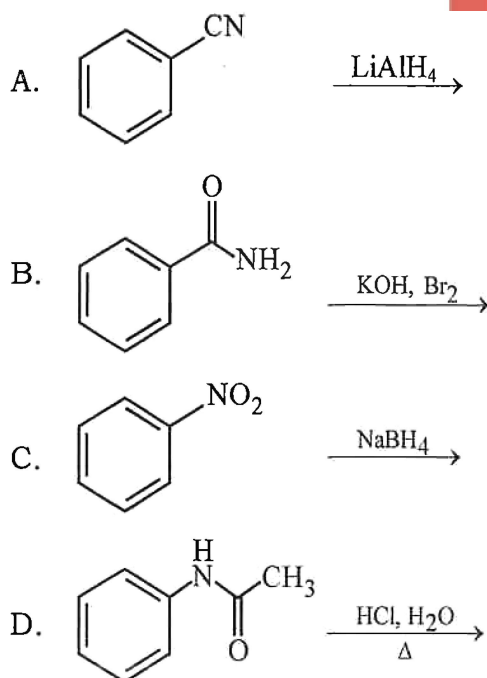
(3) Statement I is correct but Statement II is incorrect.

(4) **Statement I is incorrect** but Statement II is correct.

77. Consider the following reaction sequences and choose the correct option.



- (1) **K and L are geometrical isomers**  
 (2) K and L are enantiomers  
 (3) M and N are geometrical isomers  
 (4) M and N are stereoisomers
78. The complex which has facial and meridional isomers is  
 (Given: py = pyridine and en =  $\text{H}_2\text{N}-\text{CH}_2-\text{CH}_2-\text{NH}_2$ )  
 (1)  **$[\text{Cr}(\text{py})_3(\text{Cl})_3]$**   
 (2)  $[\text{Cr}(\text{H}_2\text{O})_6]^{3+}$   
 (3)  $[\text{Co}(\text{NH}_3)_4(\text{H}_2\text{O})_2]^{3+}$   
 (4)  $[\text{Ni}(\text{en})_2(\text{H}_2\text{O})_2]^{2+}$
79. Identify the reactions which give aniline as the major product.



Choose the correct answer from the options given below.

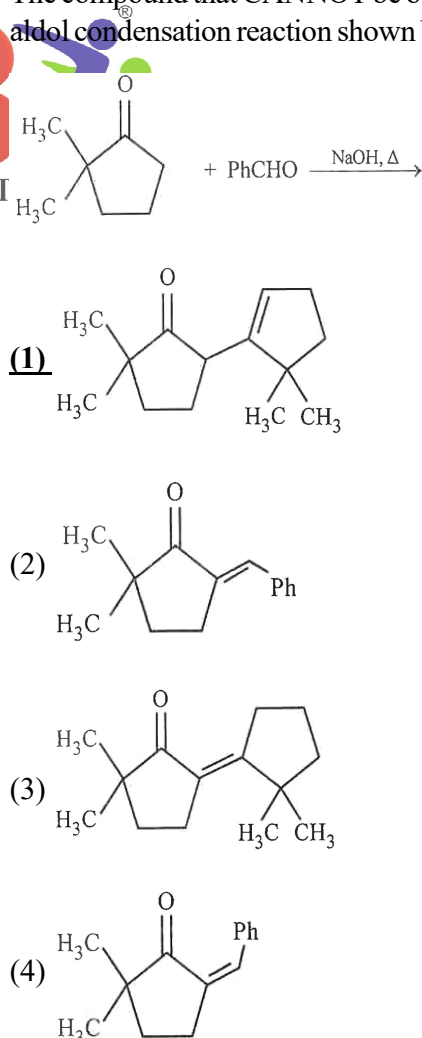
- (1) A and B only                      **(2) B and D only**  
 (3) A and C only                      (4) C and D only

80. Match the vitamins in List I with their sources in List II.

List I	List II
A. Vitamin A	I. Meat
B. Vitamin B <sub>12</sub>	II. Sunflower oil
C. Vitamin E	III. Green leafy vegetables
D. Vitamin K	IV. Carrots

Choose the correct answer from the options given below.

- (1) A-II, B-III, C-IV, D-I  
**(2) A-IV, B-I, C-II, D-III**  
 (3) A-IV, B-II, C-I, D-III  
 (4) A-III, B-I, C-IV, D-II
81. The correct decreasing order of oxidation state of the underlined atom in each molecule is
- (1) P<sub>4</sub>O<sub>10</sub> > SO<sub>3</sub> > H<sub>2</sub>O  
**(2) N<sub>2</sub>O<sub>5</sub> > Al<sub>2</sub>O<sub>3</sub> > H<sub>2</sub>S**  
 (3) PbO<sub>2</sub> > N<sub>2</sub>O<sub>3</sub> > SO<sub>3</sub>  
 (4) P<sub>4</sub>O<sub>6</sub> > Cl<sub>2</sub>O<sub>7</sub> > AlH<sub>3</sub>
82. The compound that CANNOT be obtained from the aldol condensation reaction shown below, is



83. Among the following, the compound having conjugated double bonds is

**(1) hepta-1, 3-diene**

(2) hepta-1, 4-diene

(3) hepta-1, 5-diene

(4) hepta-1, 6-diene

84. Given below are two statements:

**Statement-I:** Oxidation of p-nitrotoluene with acidic  $\text{KMnO}_4$  gives an acid that is stronger than benzoic acid.

**Statement-II:** Reduction of p-nitrotoluene with  $\text{Sn}/\text{HCl}$  followed by neutralization gives an amine that is more basic than aniline.

In light of the above statements, choose the most appropriate answer from the options given below.

**(1) Both Statement-I and Statement-II are correct.**

(2) Both Statement-I and Statement-II are incorrect.

(3) Statement-I is correct but Statement-II is incorrect.

(4) Statement-I is incorrect but Statement-II is correct.

85. The green paramagnetic species formed by heating  $\text{KMnO}_4$  at 513 K is

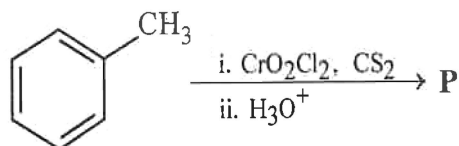
**(1)  $\text{K}_2\text{MnO}_4$**

(2)  $\text{Mn}_3\text{O}_4$

(3)  $\text{MnO}$

(4)  $\text{KO}_2$

86. Consider the following reaction, and choose the correct option.



(1) On treating compound P with saturated  $\text{NaHCO}_3$  solution, brisk effervescence is observed.

(2) Compound P can be prepared by treating benzene with anhydrous  $\text{AlCl}_3$  and  $\text{CH}_3\text{COCl}$ .

(3) On treatment with bromine water, compound P gives a white precipitate.

**(4) Compound P is obtained by the hydrogenation of benzoyl chloride with Pd on  $\text{BaSO}_4$**

87. A 1 : 3 electrolyte in an aqueous solution is

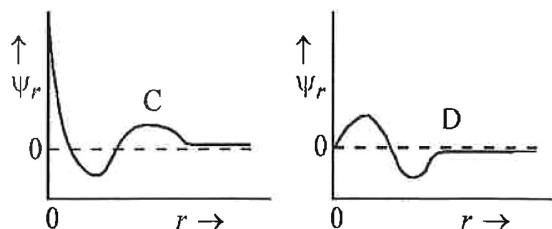
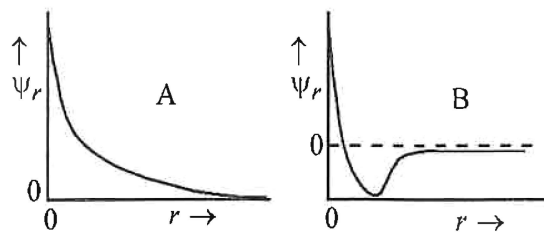
(1)  $[\text{CoCl}_2(\text{NH}_3)_4]\text{Cl}$

(2)  $[\text{CoCl}(\text{NH}_3)_5]\text{Cl}_2$

**(3)  $[\text{Co}(\text{NH}_3)_6]\text{Cl}_3$**

(4)  $[\text{Co}(\text{NH}_3)_3(\text{NO}_2)_3]$

88. Consider the following schematic plots of orbital wavefunction ( $\Psi_r$ ) against distance (r) from the nucleus.



The figure representing two radial nodes in the orbital is

(1) A

(2) B

**(3) C**

(4) D

89. Arrange the following compounds in the increasing order of polarity

A.  $\text{CH}_3\text{CH}_2\text{OCH}_2\text{CH}_3$

B.  $\text{CH}_3\text{CH}_2\text{OH}$

C.  $\text{CH}_3\text{COCH}_3$

D.  $\text{CH}_3\text{COOH}$

Choose the correct answer from the options given below.

(1)  $A < B < C < D$

(2)  $C < A < D < B$

(3)  $C < A < B < D$

**(4)  $A < C < B < D$**

90. The highest occupied molecular orbital for  $\text{Ne}_2$  is

(1)  $\pi_{2p}$

(2)  $\sigma_{2p}$

(3)  $\pi_{2p}^*$

**(4)  $\sigma_{2p}^*$**

91. The number of vertebrae in a human is \_\_\_\_\_.

- (1) 7  
(2) 12

**(3) 26**

- (4) 206

92. Symbiotic association between fungi and algae are called \_\_\_\_\_.

**(1) lichens**

- (2) sponges  
(3) mycorrhiza  
(4) chrysophytes

93. Cell theory was formulated by \_\_\_\_\_.

**(1) Schleiden and Schwann**

- (2) Robert Brown  
(3) Singer and Nicolson  
(4) Antonie Von Leeuwenhoek

94. Which of the following are characteristics of prokaryotic cells?

- (a) Ribosomes are made of 50S and 30S subunits  
(b) They can have plasmids  
(c) They contain mesosome  
(d) They have peroxisomes

Choose the **correct** answer from the options given below :

- (1) (b) and (c) only  
(2) (a) and (c) only  
(3) (a), (c) and (d) only

**(4) (a), (b) and (c) only**

95. Which of the following is **not** a part of human central neural system?

- (1) Arachnoid  
(2) Dura mater  
(3) Pia mater

**(4) Pericardium**

96. Mitochondrial inner membrane encloses \_\_\_\_\_.

**(1) matrix**

- (2) cytosol  
(3) mucus  
(4) aqueous humor

97. Match List-I with List-II.

	List-I		List-II
A.	Cristae	I.	Flat membrane sacs in stroma of chloroplast
B.	Cisternae	II.	Infoldings in mitochondria
C.	Thylakoids	III.	Cell membrane
D.	Phospholipid	IV.	Disc shaped sacs in the Golgi apparatus

Choose the **correct** answer from the options given below:

- (1) A-III, B-IV, C-I, D-II

**(2) A-II, B-IV, C-I, D-III**

- (3) A-II, B-IV, C-III, D-I

- (4) A-IV, B-III, C-I, D-II

98. The plastid that stores xanthophyll is known as \_\_\_\_\_.

- (1) chloroplast

**(2) chromoplast**

- (3) aleuroplast

- (4) amyloplast

99. Which of the following statements related to pituitary gland are **correct**?

- (a) It is divided anatomically into adenohypophysis and neurohypophysis  
(b) It secretes follicle stimulating hormone  
(c) It secretes melanocyte stimulating hormone  
(d) It does not secrete prolactin

Choose the **correct** answer from the options given below:

- (1) (a) and (b) only

**(2) (a), (b) and (c) only**

- (3) (c) and (d) only

- (4) (b) and (c) only

100. Photorespiration reaction catalyzed by RuBisCo is shown below :



Identify "X" from the given options :

- (1) Phosphoenolpyruvate

**(2) 2-Phosphoglycolate**

- (3) Oxaloacetate

- (4) Malate

Date :- 21/06/2026

101. Mad cow disease is caused by \_\_\_\_\_.

- (1) **prions** (2) viroids  
(3) *Aspergillus sp.* (4) *Mycoplasma sp.*

102. Which pigment has absorption peak at 700 nm in the photosynthetic reaction centre PS I (P700)?

- (1) Chlorophyll b  
(2) **Chlorophyll a**  
(3) Xanthophylls  
(4) Carotenoids

103. In water, frogs respire using \_\_\_\_\_.

- (1) **skin**  
(2) buccal cavity  
(3) lungs  
(4) trachea

104. Which of the following represents the correct sequence of arrangement of bones in the lower limb of humans?

- (1) Femur-tibia-patella-tarsal  
(2) Patella-femur-tibia-tarsal  
(3) **Femur-patella-tibia-tarsal**  
(4) Femur-tarsal-patella-tibia

105. Phyllotaxy is the pattern of arrangement of \_\_\_\_\_.

- (1) **leaves**  
(2) flowers  
(3) fruits  
(4) sepals

106. Match List-I with List-II.

List-I	List-II
A. Starch	I. Fights infection
B. Antibody	II. Energy storage
C. Concanavalin A	III. Glucose transport
D. Glut-4	IV. Lectin

Choose the **correct** answer from the options given below:

- (1) A-I, B-II, C-IV, D-III  
(2) **A-II, B-I, C-IV, D-III**  
(3) A-II, B-I, C-III, D-IV  
(4) A-I, B-II, C-III, D-IV

107. Given below are two statements:

**Statement I:** When any plane passing through the central axis of the body divides the organism into two identical halves, it is called radial symmetry.

**Statement II:** In phylum Echinodermata, both adults and larvae are radially symmetrical.

In the light of the above statements, choose the most appropriate answer from the options given below :

- (1) Both Statement I and Statement II are correct  
(2) Both Statement I and Statement II are incorrect  
(3) **Statement I is correct but Statement II is incorrect**  
(4) Statement I is incorrect but Statement II is correct

108. Endomembrane system includes \_\_\_\_\_.

- (1) **Endoplasmic reticulum, Golgi complex, lysosomes and vacuole**  
(2) Endoplasmic reticulum, chloroplast, peroxisomes and vacuole  
(3) Mitochondria, chloroplast, peroxisomes and vacuole  
(4) Golgi complex, chloroplast, peroxisomes and vacuole

109. How many molecules of pyruvic acid are produced at the end of glycolysis from 206 molecules of glucose?

- (1) 206  
(2) 309  
(3) 103  
(4) **412**

110. Which of the following plant growth regulators is used as herbicide?

- (1) **2,4-D**  
(2) Kinetin  
(3) Abscisic acid  
(4) Gibberellin

Since 1999

**IIB**  
CAREER INSTITUTE PVT. LTD.

Date :- 21/06/2026

111. Given below are two statements:

**Statement I:** In gymnosperms, the male and female gametophytes remain within the sporangia.

**Statement II:** In gymnosperms, seeds are not covered.

In the light of the above statements, choose the most appropriate answer from the options given below :

**(1) Both Statement I and Statement II are correct**

(2) Both Statement I and Statement II are incorrect

(3) Statement I is correct but Statement II is incorrect

(4) Statement I is incorrect but Statement II is correct

112. Match List-I with List-II.

**List-I**

- A. Spherical  
B. Rod  
C. Comma  
D. Spirillum

**List-II**

- I. Vibrio  
II. Cocci  
III. Spirillum  
IV. Bacilli

Choose the **correct** answer from the options given below:

(1) A-I, B-III, C-II, D-IV

(2) A-III, B-II, C-I, D-IV

(3) A-II, B-I, C-IV, D-III

**(4) A-II, B-IV, C-I, D-III**

113. Which of the following are characteristic features of Solanaceae family?

(a) Flowers are bisexual and actinomorphic

(b) Calyx have five sepals and are united

(c) Androecium have five stamens and are epipetalous

(d) Ovary is inferior

Choose the **correct** answer from the options given below:

**(1) (a), (b) and (c) only**

(2) (d) only

(3) (a) and (b) only

(4) (b), (c) and (d) only

114. Select the correct sequence of experiments that led to a gradual understanding of photosynthesis in green plants.

(1) Absorption spectra of chlorophyll a and b → production of glucose → release of oxygen → role of air

**(2) Role of air → release of oxygen → production of glucose → absorption spectra of chlorophyll a and b**

(3) Release of oxygen → production of glucose → absorption spectra of chlorophyll a and b → role of air

(4) Production of glucose → role of air → release of oxygen → absorption spectra of chlorophyll a and b

115. The number of action potentials generated by sinoatrial node (SAN) in a healthy human is \_\_\_\_\_ per minute.

(1) 28–30

**(2) 70–75**

(3) 100–110

(4) 120–140

116. How many turns of Calvin cycle are required for the formation of three molecules of glucose?

(1) 6

(2) 3

(3) 1

**(4) 18**

117. Which of the following statements is **incorrect**?

(1) Blood coagulates in response to an injury

(2) Blood clot consists of fibrins

(3) Fibrin is produced from fibrinogen

**(4) Fibrinogen is produced from fibrin**

118. Match List-I with List-II.

**List-I**

- A. Family  
B. Genus  
C. Class  
D. Phylum  
E. Order

**List-II**

- I. Sapindales  
II. Dicotyledonae  
III. Anacardiaceae  
IV. Angiospermae  
V. *Mangifera*

Choose the **correct** answer from the options given below:

(1) A-I, B-V, C-II, D-IV, E-III

(2) A-II, B-I, C-III, D-IV, E-V

(3) A-II, B-III, C-V, D-I, E-IV

**(4) A-III, B-V, C-II, D-IV, E-I**

119. Arrange the following taxonomic categories in ascending order.

- |             |             |
|-------------|-------------|
| (a) Genus   | (b) Class   |
| (c) Order   | (d) Phylum  |
| (e) Family  | (f) Kingdom |
| (g) Species |             |

Choose the **correct** answer from the options given below :

**(1) (g), (a), (e), (c), (b), (d), (f)**

(2) (a), (c), (d), (g), (f), (b), (e)

(3) (g), (c), (d), (b), (e), (a), (f)

(4) (f), (c), (b), (g), (d), (e), (a)

120. Match List-I with List-II.

**List-I**

**List-II**

- |                              |                    |
|------------------------------|--------------------|
| A. Marginal placentation     | I. <i>Argemone</i> |
| B. Axile placentation        | II. Tomato         |
| C. Parietal placentation     | III. Primrose      |
| D. Free central placentation | IV. Pea            |

Choose the **correct** answer from the options given below :

(1) A-II, B-IV, C-I, D-III

(2) A-IV, B-II, C-III, D-I

(3) A-IV, B-III, C-I, D-II

**(4) A-IV, B-II, C-I, D-III**

121. Sphenopsida class belongs to \_\_\_\_\_.

- |                 |                          |
|-----------------|--------------------------|
| (1) Bryophytes  | (2) Angiosperms          |
| (3) Gymnosperms | <b>(4) Pteridophytes</b> |

122. Which of the following statements regarding photorespiration are correct?

- (a) Do not occur in C<sub>3</sub> plants  
 (b) CO<sub>2</sub> is consumed and O<sub>2</sub> is generated  
 (c) Phosphoglycolate is formed  
 (d) No synthesis of ATP and NADPH

Choose the correct answer from the options given below :

(1) (a) and (d) only

**(2) (c) and (d) only**

(3) (b) and (d) only

(4) (a) and (b) only

123. Smooth endoplasmic reticulum \_\_\_\_\_.

(1) has ribosomes attached to its surface

**(2) Is the major site for the synthesis of lipids**

(3) Is actively involved in protein synthesis

(4) Is a site for the synthesis of carbohydrates

124. Which one of the following statements is incorrect?

(1)  $\alpha$ -cells of pancreas secrete glucagon

**(2)  $\alpha$ -cells of pancreas secrete insulin**

(3) Glucagon stimulates glycogenolysis

(4)  $\beta$ -cells of pancreas secrete insulin

125. Genus represents \_\_\_\_\_.

(1) An individual plant or animal

(2) A population of plants and animals

**(3) A group of closely related species**

(4) A group of closely related families

126. Which of the following is not a prokaryote?

(1) Bacteria

(2) Blue-green algae

(3) Mycoplasma

**(4) Fungi**

127. Which of the following plant growth regulators promotes internode elongation prior to flowering in cabbage?

(1) Abscisic acid

**(2) Gibberellin**

(3) Indole butyric acid

(4) Ethephon

128. The correct sequence of adult cell cycle phases is \_\_\_\_\_.

(1) G<sub>1</sub>-G<sub>2</sub>-S-M

(2) G<sub>1</sub>-M-G<sub>2</sub>-S

**(3) G<sub>1</sub>-S-G<sub>2</sub>-M**

(4) S-M-G<sub>2</sub>-G<sub>1</sub>

Since 1999



CAREER INSTITUTE

Date :- 21/06/2026

129. Match List-I with List-II.

List - I		List -II	
A.	Fusion of protoplasts between gametes	I.	Meiosis
B.	Fusion of two nuclei	II.	Plasmogamy
C.	Generation of haploid spores	III.	Karyogamy

Choose the correct answer from the options given below :

**(1) A-II, B-III, C-I**

(2) A-II, B-I, C-III

(3) A-III, B-II, C-I

(4) A-I, B-III, C-II

130. Given below are two statements:

**Statement I:** The class name Reptilia refers to creeping or crawling mode of locomotion.

**Statement II:** All organisms belonging to Reptilia have three chambered heart.

In the light of the above statements, Choose the most appropriate answer from the options given below :

(1) Both Statement I and Statement II are correct

(2) Both Statement I and Statement II are incorrect

**(3) Statement I is correct but Statement II is incorrect**

(4) Statement I is incorrect but Statement II is correct

131. Given below are two statements:

**Statement I:** Chromosomes are fully condensed at the end of prophase I.

**Statement II:** Meiosis I resembles mitosis.

In the light of the above statements, Choose the most appropriate answer from the options given below :

(1) Both Statement I and Statement II are true

(2) Both Statement I and Statement II are false

**(3) Statement I is correct, but Statement II is false**

(4) Statement I is incorrect, but Statement II is true

132. Which of the following is not a characteristic of chordates?

(1) Presence of notochord

(2) Central nervous system is dorsal

**(3) Absence of gills**

(4) Presence of post anal part (tail)

133. Length of the stem at time 0 is 20 cm. The arithmetic growth rate is 30 cm per day. What is the length of the stem at the end of 7th day?

(1) 50 cm

(2) 170 cm

**(3) 230 cm**

(4) 460 cm

134. Arrange the following elements in descending order of their contribution to percentage weight of the human body.

(a) Oxygen

(b) Carbon

(c) Hydrogen

(d) Nitrogen

Choose the correct answer:

**(1) (a), (b), (c), (d)**

(2) (c), (a), (b), (d)

(3) (b), (c), (d), (a)

(4) (b), (a), (c), (d)

135. In frogs, the number of pairs of cranial nerves arising from the brain are \_\_\_\_\_.

(1) 6 (2) 9

**(3) 10 (4) 12**

136. Which of the following is used as a clot buster?

**(1) Streptokinase**

(2) Penicillin

(3) Cyclosporin A

(4) Statins

Date :- 21/06/2026

137. The inactive form of Bt toxin is converted to the active form in the insect gut \_\_\_\_\_.

**(1) Due to alkaline pH**

(2) Due to acidic pH

(3) By proteases

(4) By nucleases

138. Given below are two statements:

**Statement I:** Down's syndrome is caused by absence of one of the X-chromosomes.

**Statement II:** Turner's syndrome is caused by the presence of an additional copy of the chromosomes.

In the light of the above statements, choose the **correct** answer from the options given below :

(1) Both Statement I and Statement II are correct

**(2) Both Statement I and Statement II are incorrect**

(3) Statement I is correct but Statement II is incorrect

(4) Statement I is incorrect but Statement II is correct

139. Which of the following disease is **not** sexually transmitted?

(1) Syphilis

**(2) Tuberculosis**

(3) Gonorrhoea

(4) Genital warts

140. Sperm motility is due to \_\_\_\_\_.

**(1) Flagellar movement**

(2) Ciliary movement

(3) Amoeboid movement

(4) Muscular movement

141. Natural selection can lead to \_\_\_\_\_.

(a) Stabilisation

(b) Genetic drift

(c) Directional change

(d) Disruption

Choose the correct answer from the options given below :

(1) (a) only

**(2) (a), (c) and (d) only**

(3) (a), (b), (c) and (d)

(4) (a) and (c) only

142. The method of directly of injecting a sperm into ovum in assisted reproductive technology is called:

(1) Gamete intra fallopian transfer (GIFT)

(2) Zygote intra fallopian transfer (ZIFT)

**(3) Intra cytoplasmic sperm injection (ICSI)**

(4) Embryo transfer (ET)

143. Which of the following structure is not a part of the male reproductive system?

(1) Rete testis

(2) Epididymis

(3) Vasa efferentia

**(4) Infundibulum**

144. Arrange the following in descending order of number of species in the Amazonian rain forest.

(a) Plants

(b) Birds

(c) Fishes

(d) Invertebrates

(e) Mammals

(1) (c) > (b) > (d) > (e) > (a)

**(2) (d) > (a) > (b) > (c) > (e)**

(3) (e) > (b) > (a) > (c) > (d)

(4) (b) > (a) > (d) > (c) > (e)

Date :- 21/06/2026

145. Given below are two statements:

**Statement I:** Ovulation is caused by LH surge leading to rupture of Graafian follicles.

**Statement II:** Graafian follicle remaining after ovulation transforms into corpus luteum and secretes large amount of estrogen.

In the light of the above statements,

Choose the **most appropriate** answer from the options given below :

(1) Both Statement I and Statement II are correct

(2) Both Statement I and Statement II are incorrect

**(3) Statement I is correct but Statement II is incorrect**

(4) Statement I is incorrect but Statement II is correct

146. Which of the following are primary consumers in a food chain ?

(1) Parasites

(2) Predators

**(3) Herbivores**

(4) Carnivores

147. A population of diploid organisms is at Hardy-Weinberg equilibrium. If the frequency of allele A is 0.1, the frequency of AA is \_\_\_\_\_.

**(1) 0.01** (2) 0.02

(3) 0.10 (4) 0.99

148. Match List-I with List-II.

List - I		List - II	
A.	Excess growth hormone	I.	Reabsorption of water and electrolytes in kidney
B.	Luteinizing hormone	II.	Contraction of uterus during child birth
C.	Vasopressin	III.	Acromegaly
D.	Oxytocin	IV.	Ovulation

Choose the correct answer from the options given below :

(1) A-III, B-IV, C-II, D-I

**(2) A-III, B-IV, C-I, D-II**

(3) A-II, B-IV, C-I, D-III

(4) A-IV, B-III, C-I, D-II

149. The opening between the right atrium and the right ventricle is guarded by \_\_\_\_\_.

(1) Bicuspid valve

**(2) Tricuspid valve**

(3) Semilunar valve

(4) Sino-atrial node

150. Sponges exchange  $O_2$  with  $CO_2$  by \_\_\_\_\_.

**(1) Simple diffusion over their entire body surfaces**

(2) Moist cuticle

(3) Tracheal tubes

(4) Gills

151. How many theca are present in each lobe of a typical bilobed angiosperm anther ?

**(1) 2** (2) 6

(3) 8 (4) 12

152. Muscle contraction is initiated by a signal sent by the central nervous system by the release of \_\_\_\_\_.

**(1) Acetyl choline**

(2) Acetyl coenzyme A

(3) Cyclic guanine monophosphate

(4) Cyclic adenine monophosphate

153. Which of the following statements about lac operon is correct ?

**(1) Gene *i* is constitutively expressed**

(2) Lactose activates repressor to bind to the operator

(3) Genes *i*, *z*, *y* and *a* share single common promoter

(4) Galactose can act as an inducer of lac operon

154. Which of the following in female gametophyte of an angiosperm helps in guiding the pollen tube for fertilizing the eggs ?

(1) Antipodals

**(2) Synergids**

(3) Central cells

(4) Polar nucleus

155. Which of the following plant produces non-albuminous seeds ?

(1) Wheat

(2) Maize

(3) Barley

**(4) Pea**

Date :- 21/06/2026

156. If the diploid chromosome number of typical angiosperm is 36, what would be the chromosome number in its endosperm ?
- (1) 18  
(2) 36  
**(3) 54**  
(4) 72
157. Which of the following statements about the reabsorption process in Henle's loop are **correct**?
- (a) The descending limb of Henle's loop is permeable to water but almost impermeable to electrolytes.  
(b) Urine gets concentrated in Henle's loop.  
(c) Reabsorption of  $\text{Na}^+$  and water takes place in Henle's loop.  
(d) Active or passive transport of electrolytes occurs in the ascending limb of Henle's loop.
- Choose the **correct** answer from the options given below :
- (1) (a) and (b) only  
(2) (b), (c) and (d) only  
(3) (a), (b) and (c) only  
**(4) (a), (b) and (d) only**
158. Which of the following is the **correct** order of arrangement of vertebrate column from the head to toe ?
- (1) Cervical vertebra, thoracic vertebra, sacrum, lumbar vertebra  
(2) Sacrum, lumbar vertebra, thoracic vertebra, cervical vertebra  
(3) Cervical vertebra, lumbar vertebra, thoracic vertebra, sacrum  
**(4) Cervical vertebra, thoracic vertebra, lumbar vertebra, sacrum**
159. Which of the following is not evidence for evolution ?
- (1) Convergent evolution of traits like wings of birds and butterflies  
(2) Paleontological evidence from fossil records  
**(3) Embryological support for evolution as proposed by Ernst Haeckel**  
(4) Divergent evolution of anatomical structures such as forelimbs
160. Given below are two statements :
- Statement I** : Modern *Homo sapiens* arose in Australia and moved across continents.  
**Statement II** : *Homo sapiens* arose around 75000 to 10000 years ago.
- In the light of the above statements, choose the most appropriate answer from the options given below :
- (1) Both Statement I and Statement II are correct  
(2) Both Statement I and Statement II are incorrect  
(3) Statement I is correct but Statement II is incorrect  
**(4) Statement I is incorrect but Statement II is correct**
161. Consider a population of 10 million cells. Given the per-capita birth rate of 0.002 (per unit time) and the per-capita death rate of 0.002 (per unit time), the expected number of cells after 10 generations is \_\_\_\_\_.
- (1) 1 million  
(2) 5 million  
**(3) 10 million**  
(4) 100 million
162. During PCR, primers bind to the DNA strands in the \_\_\_\_\_ step.
- (1) Denaturation  
(2) Extension  
**(3) Annealing**  
(4) Ligation
163. Given below are two statements : one is labelled as Assertion A and the other is labelled as Reason R.
- Assertion A** : The logistic growth model of populations is considered more realistic than the exponential growth model.  
**Reason R** : Resources are finite.
- In the light of the above statements, choose the most appropriate answer from the options given below :
- (1) Both A and R are correct and R is the correct explanation of A**  
(2) Both A and R are correct but R is not the correct explanation of A  
(3) A is correct but R is not correct  
(4) A is not correct but R is correct

164. Adaptive radiation in placental mammals and Australian Marsupials leading to similarity between distant species is an example of \_\_\_\_\_.
- (1) Divergent evolution
- (2) Convergent evolution**
- (3) Founder effect
- (4) Genetic drift
165. Which of the following are secondary lymphoid organs ?
- (a) Bone marrow
- (b) Tonsils
- (c) Spleen
- (d) Thymus
- Choose the **correct** answer from the options given below :
- (1) (a) and (b) only
- (2) (b) and (c) only**
- (3) (b) and (d) only
- (4) (a) and (d) only
166. Which of the following hormone is not secreted by human placenta ?
- (1) hCG
- (2) Estrogen
- (3) Progesterone
- (4) LH**
167. Which of the following enzymes synthesizes precursor mRNA ?
- (1) RNA polymerase I
- (2) RNA polymerase II**
- (3) RNA polymerase III
- (4) DNA polymerase
168. Given below are two statements :
- Statement I** : Plasmids are autonomously replicating DNA.
- Statement II** : Plasmids are extrachromosomal DNA.
- In the light of the above statements, choose the most appropriate answer from the options given below :
- (1) Both Statement I and Statement II are correct**
- (2) Both Statement I and Statement II are incorrect
- (3) Statement I is correct but Statement II is incorrect
- (4) Statement I is incorrect but Statement II is correct
169. For a person with blood group 'O', which of the following is not a possible combination of parents' blood group genotypes ?
- (1) Father :  $I^A i$  and Mother :  $I^B i$
- (2) Father :  $I^A i$  and Mother :  $I^A i$
- (3) Father :  $I^B i$  and Mother :  $I^B i$
- (4) Father :  $I^A I^B$  and Mother :  $I^A i$**
170. Given below are two statements : one is labelled as Assertion A and the other is labelled as Reason R.
- Assertion A** : Forelimbs of human and bats are homologous.
- Reason R** : Forelimbs of humans and bats have similar anatomical structure.
- In the light of the above statements, choose the most appropriate answer from the options given below :
- (1) Both A and R are correct and R is the correct explanation of A**
- (2) Both A and R are true, but R is not the correct explanation of A
- (3) A is true but R is false
- (4) A is false but R is true
171. Colostrum, secreted by mother during initial days of lactation, is abundant in \_\_\_\_\_.
- (1) IgG
- (2) IgM
- (3) IgA**
- (4) IgD
172. Given below are two statements : one is labelled as Assertion A and the other is labelled as Reason R.
- Assertion A** : Abingdon tortoise in Galapagos islands became extinct within a decade after goats were introduced.
- Reason R** : Goats were more efficient at browsing than Abingdon tortoise.
- In the light of the above statements, choose the most appropriate answer from the options given below :
- (1) Both A and R are correct and R is the correct explanation of A**
- (2) Both A and R are correct but R is not the correct explanation of A
- (3) A is correct but R is not correct
- (4) A is not correct but R is correct

Date :- 21/06/2026

173. The covering of ovum at ovulation is \_\_\_\_\_.

(1) Endometrium

**(2) Zona radiata**

**(3) Zona pellucida**

(4) Chorion

174. Match List-I with List-II.

**List-I**

**List-II**

A. Both species

I. Predation

are harmed

B. One species is

II. Mutualism

harmed and the

other is benefited

C. Both species

III. Competition

are benefited

D. One is benefited

IV. Commensalism

while the other has

no effect

Choose the correct answer from the options given below :

(1) A-III, B-IV, C-II, D-I

(2) A-I, B-II, C-III, D-IV

(3) A-II, B-I, C-IV, D-III

**(4) A-III, B-I, C-II, D-IV**

175. Given below are two statements : one is labelled as Assertion A and the other is labelled as Reason R.

**Assertion A :** In an experiment, Mendel observed that the F<sub>1</sub> progeny plants are all tall and none are dwarf.

**Reason R :** Stem height is a contrasting trait, with tall being dominant and dwarf being recessive.

In the light of the above statements, choose the most appropriate answer from the options given below :

**(1) Both A and R are correct and R is the correct explanation of A**

(2) Both A and R are correct but R is not the correct explanation of A

(3) A is correct but R is not correct

(4) A is not correct but R is correct

UP176. Given below are two statements : one is labelled as Assertion A and the other is labelled as Reason R.

**Assertion A :** In recombinant DNA technology, lysozyme is used for disrupting bacterial cells while cellulase is for plant cells.

**Reason R :** Isolation of genetic material needs disruption of cells.

In the light of the above statements, choose the most appropriate answer from the options given below :

**(1) Both A and R are correct and R is the correct explanation of A**

(2) Both A and R are correct but R is not the correct explanation of A

(3) A is correct but R is not correct

(4) A is not correct but R is correct

177. Which of the following is used as an effective sedative and painkiller for treating post-surgery patients ?

(1) Interferon

(2) Antibiotics

**(3) Morphine**

(4) Anti-retroviral drugs

178. Which of the following statements are correct ?

(a) Energy flow from producers to consumers is unidirectional

(b) Energy pyramid can never be inverted

(c) Transfer of energy follows the 1% law

Choose the correct answer from the options given below :

(1) (a), (b) and (c)

**(2) (a) and (b) only**

(3) (a) and (c) only

(4) (b) and (c) only

179. Which of the following statements is correct about *Plasmodium* ?

(1) Reproduces sexually in liver cells

(2) Reproduces sexually in RBCs

(3) Gametocytes develop in mosquito gut

**(4) Fertilization takes place in mosquito gut**

180. Match List-I with List-II.

**List-I**

**List-II**

A. Transformation

I. Restriction enzyme

B. Cloning site

II. Transfer DNA to host bacteria

C. Selection

III. Replication

D. Ori

IV. Antibiotic

Choose the correct answer from the options given below :

**(1) A-II, B-I, C-IV, D-III**

(2) A-I, B-II, C-IV, D-III

(3) A-III, B-IV, C-II, D-I

(4) A-IV, B-I, C-III, D-II

Date :- 21/06/2026

Physics						Chemistry					
Q	A	Q	A	Q	A	Q	A	Q	A	Q	A
1	4	16	2	31	3	46	3	61	1	76	4
2	4	17	3	32	2	47	3	62	1	77	1
3	4	18	1	33	2	48	1	63	1	78	1
4	3	19	3	34	3	49	1	64	3	79	2
5	1	20	3	35	3	50	3	65	4	80	2
6	3	21	4	36	1,4	51	3	66	1	81	2
7	1	22	2	37	1	52	4	67	4	82	1
8	1	23	3	38	2,3	53	3	68	4	83	1
9	4	24	3	39	3	54	3	69	1	84	1
10	4	25	4	40	4	55	3	70	2	85	1
11	1	26	4/#	41	1	56	2	71	1	86	4
12	1	27	2	42	3	57	1	72	4	87	3
13	3	28	2	43	3	58	1	73	1	88	3
14	2	29	2	44	3	59	4	74	1	89	4
15	2	30	1	45	1	60	2	75	2	90	4
Biology											
Q	A	Q	A	Q	A	Q	A	Q	A	Q	A
91	3	106	2	121	4	136	1	151	1	166	4
92	1	107	3	122	2	137	1	152	1	167	2
93	1	108	1	123	2	138	2	153	1	168	1
94	4	109	4	124	2	139	2	154	2	169	4
95	4	110	1	125	3	140	1	155	4	170	1
96	1	111	1	126	4	141	2	156	3	171	3
97	2	112	4	127	2	142	3	157	4	172	1
98	2	113	1	128	3	143	4	158	4	*173	3,2
99	2	114	2	129	1	144	2	159	3	174	4
100	2	115	2	130	3	145	3	160	4	175	1
101	1	116	4	131	3	146	3	161	3	176	1
102	2	117	4	132	3	147	1	162	3	177	3
103	1	118	4	133	3	148	2	163	1	178	2
104	3	119	1	134	1	149	2	164	2	179	4
105	1	120	4	135	3	150	1	165	2	180	1
<b>#Bonus *Provisional</b>											